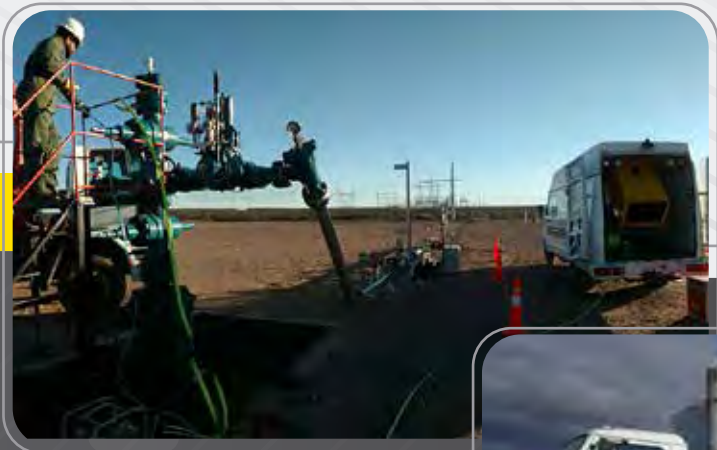
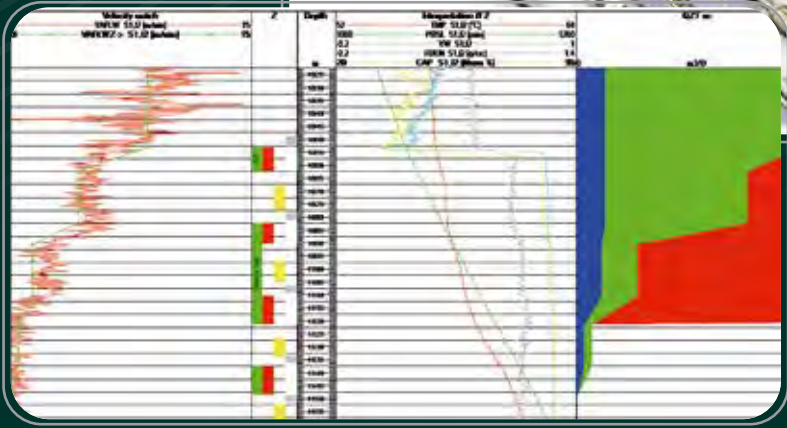


# SEEP



**SLICK LINE**  
services



# SENSORES DE FONDO DE POZO



## Superficie 1 canal Presión Temperatura – Data Loggers



### PRTEMP1000 SPECIFICATIONS\*

<b>Temperature Sensor:</b> Semiconductor	<b>Memory:</b> 16,383 readings per channel, 32,766 total readings
<b>Temperature Range:</b> -40 to +80°C	<b>Reading Rate:</b> 1 reading every 2 seconds to 1 every 12 hours
<b>Temperature Resolution:</b> 0.1°C	<b>Calibration:</b> Digital calibration through software
<b>Calibrated Accuracy:</b> ±0.5°C	<b>Calibration Date:</b> Automatically recorded within device
<b>Pressure Sensor:</b> Semiconductor strain gauge	<b>Battery Type:</b> 3.6V lithium battery included; user replaceable
<b>Pressure Range:</b> 0 to 30, 100, 300 and 500PSIA/G; 0 to 1000 and 5000PSIA	<b>Battery Life:</b> 1 year typical
<b>Pressure Resolution:</b> 0.002, 0.005, 0.02, 0.05PSIA/G; 0.05, 0.2PSIA	<b>Data Format:</b> Date and time stamped °C, °F, K, °R ; PSIA(g), inches, feet, mmHg, bar, Torr, kPa,
<b>Calibrated Accuracy:</b> 2% FSR, 0.25% @ 25°C typical	<b>Time Accuracy:</b> ±1 minute/month (at 20°C, RS232 port not in use )
<b>Pressure Response Time:</b> 0.1 ms (10 to 90% FSR)	<b>Computer Interface:</b> PC serial or USB (interface cable required); 2,400 baud
<b>Repeatability:</b> ±0.5% FSR; ±0.2% typical	<b>Software:</b> XP SP3/Vista/Windows 7
<b>Adaptor:</b> 1/4" male NPT or submersible up to 60 PSI	<b>Operating Environment:</b> -40 to +80°C, 0 to 100%RH
<b>Start Modes:</b> Software programmable immediate start or delay start up to six months in advance	<b>Dimensions:</b> 6.4" x 1.25" (163mm x 32mm)
<b>Real Time Recording:</b> May be used with PC to monitor and record data in real time	<b>Weight:</b> 12 oz (340 g)
	<b>Material:</b> Stainless Steel
	<b>Approvals:</b> CE

## Superficie 2 canales Presión Temperatura – Data Loggers



MODEL	SS6100
<b>Input channels</b>	1-3 Channels (see Sensor Types)
<b>Pressure Sensor</b>	
Sensor type	<b>Sapphire (piezo-resistive)</b>
Available ranges	750, 1500, 3k, 6k, 10k or 15k (psi)
Accuracy	0.03% Full Scale
Resolution	0.0003% Full Scale
Sensor type	<b>Quartz</b>
Available ranges	5k, 10k or 15k (psi)
Accuracy	0.020% Full Scale
Resolution	0.0002% Full Scale
<b>Stem Housing</b>	17-4 PH Stainless or Inconel-718
<b>Temperature Sensor</b>	
Sensor Type	Remote fast response RTD
Probe Housing	17-4 PH Stainless
Probe Sheath	316 Stainless
Remote Distance	Standard 10m (optional up to 30m)
Range	177°C (350°F)
Accuracy	+/- 0.4°C (0.7°F)
Resolution	0.005°C (0.009°F)
<b>Calibration</b>	< 3 psi drift per year (Recommend re-calibration every 9-12 months)
<b>Communications</b>	Full speed USB 2.0
<b>Data Acquisition</b>	
Total Sample Capacity	2,000,000 samples/channel
Maximum Sample Rate	1 sample/second
Programmable Sample Modes	Up to 15 different intervals
<b>Power</b>	
	Lithium-Ion Rechargeable Battery (non-restricted for transport) (certified intrinsically safe -20°C to 40°C )
	Non-Rechargeable Lithium Battery (certified intrinsically safe -40°C to 70°C )
<b>Safety</b>	CSA approved as intrinsically safe Class I, Division 1
<b>Operating Range</b>	-40°C to 70°C (-40°F to 158°F)
<b>Software OS Compatibility</b>	Windows 7/Vista/XP/NT/2000

## Downhole 1 canal Presión / Temperatura



Tipo de Sensor	Piezoresistivo
Rango de Temperatura	0-170 °C
Rango de presión	0-5.000 Psig / 0- 10.000 psig
Precisión de presión	+/- 0.024% del rango total
Resolución de presión	+/- 0.0003% del rango total
Máxima presión	110% del rango total
Precisión de temperatura	+/- 1 °C
Resolución de temperatura	0.05 °C
Linealidad de presión	+/- 0.024 % rango total
Histéresis del sensor	+/- 0.006 % rango total
Repetibilidad del sensor	+/- 0.003 % rango total
Capacidad de memoria	2000.000 datos de presión/temp/tiempo
Modo de programación	Hasta 32 secuencias diferentes
Dimensiones totales	32 mm. O.D. x 125 cm de longitud
Tipo de material	Acero inoxidable 255 / Inconel

### APLICACIONES

- Well testing
- Monitor Well Performance
- Completion Diagnostics
- Well Stimulation
- Reservoir Characterization
- Gradient Surveys

## Sensores de Fondo de Pozo

Tipo de Sensor	Quarz Class gauge
Rango de Temperatura	0-150 °C
Rango de presión	0-5.000 Psig / 0- 10.000 psig
Precisión de presión	+/- 0.025% del rango total
Resolución de presión	+/- 0.0002% del rango total
Máxima presión	110% del rango total
Precisión de temperatura	+/- 1 °C
Resolución de temperatura	0.01 °C
Linealidad de presión	+/- 0.005 % rango total
Histéresis del sensor	+/- 0.006 % rango total
Repetibilidad del sensor	+/- 0.003 % rango total
Capacidad de memoria	2000.000 datos de presión/temp/tiempo
Modo de programación	Hasta 64 secuencias diferentes
Dimensiones totales	32 mm. O.D. x 125 cm de longitud
Tipo de material	Acero inoxidable 255 / Inconel



## Downhole 2 canales Presión / Temperatura - 1 RTD Rapid Resistive Temperature Device

### CARACTERISTICAS PRINCIPALES

- Rápida respuesta de temperatura
- Alta resolución
- Alta precisión
- Batería larga duración
- Gran capacidad de memoria

